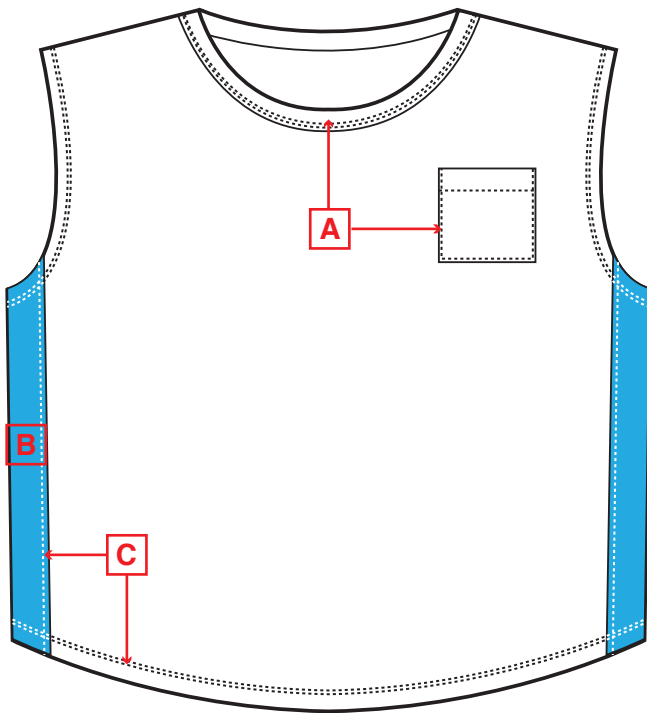


COMPANY

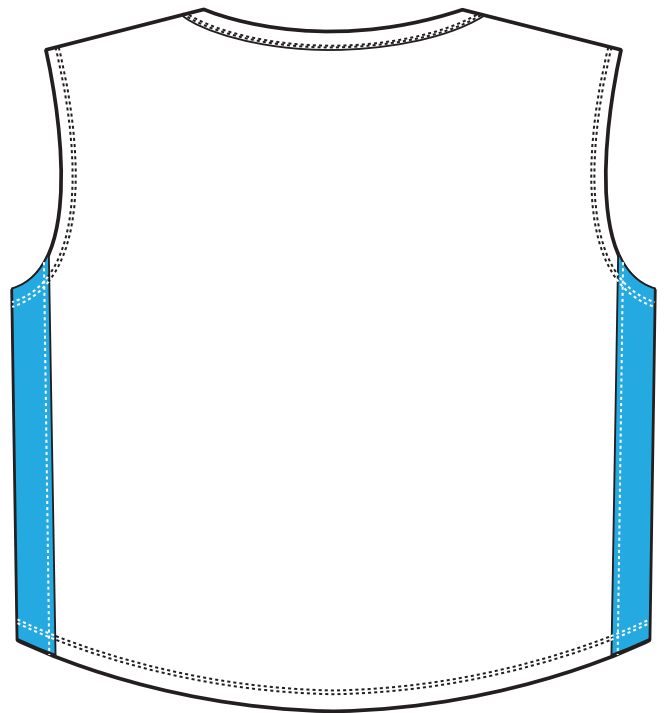
STYLE: 100ABC

TECH : 1.29.14

SPRING 14 : POCKET T



FRONT



BACK

MATERIALS:

	ARTICLE DESCRIPTION	COLORWAY 1	COLORWAY 2
A MAIN	COTTON / POLY JERSEY AS REF CARD #101A	WHITE	
B COMBO	COTTON / POLY JERSEY AS REF CARD #101B	AQUA	
C THREAD	COTTON THREAD	WHITE	
D			
E			

MEASUREMENTS

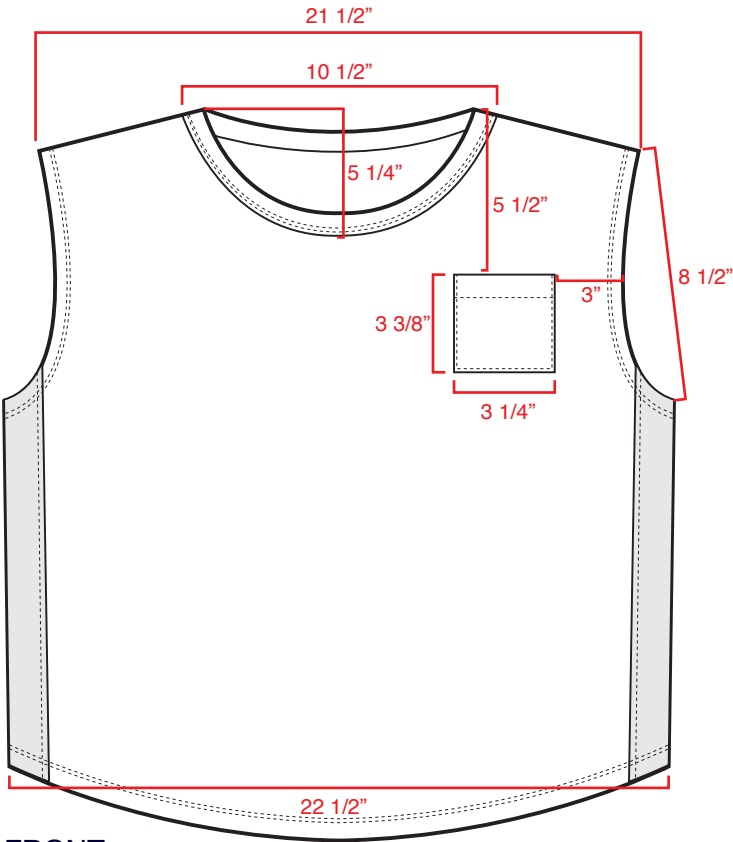
COMPANY

STYLE: 100ABC

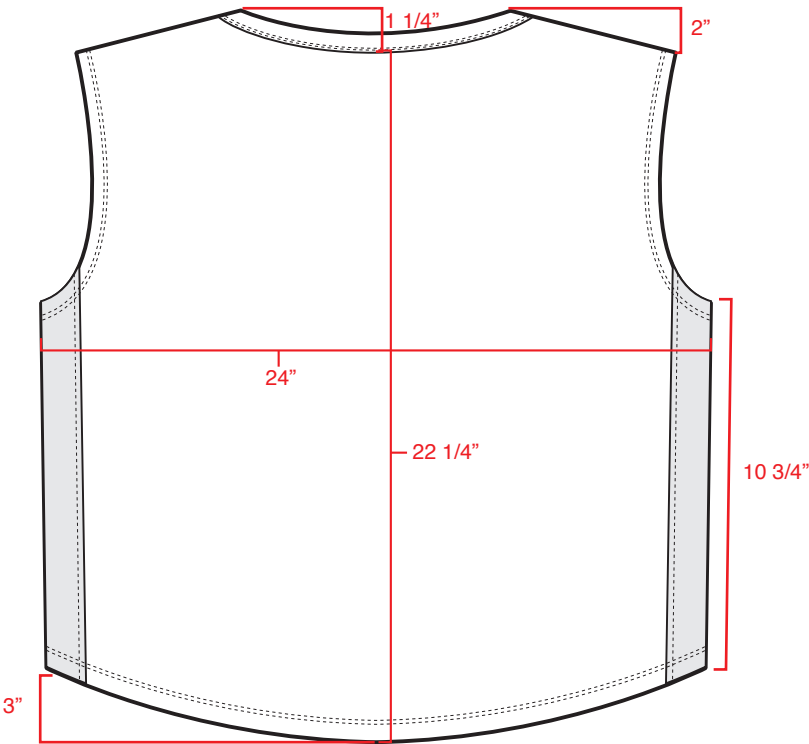
TECH : 1.29.14

SPRING 14 : POCKET T

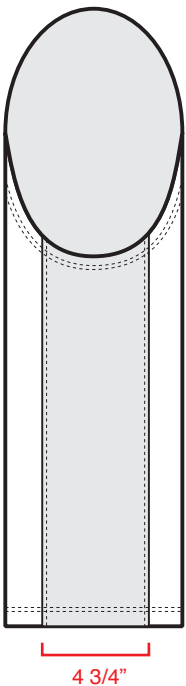
*SEE EXCEL PAGE FOR FULL MEASUREMENTS



FRONT



BACK



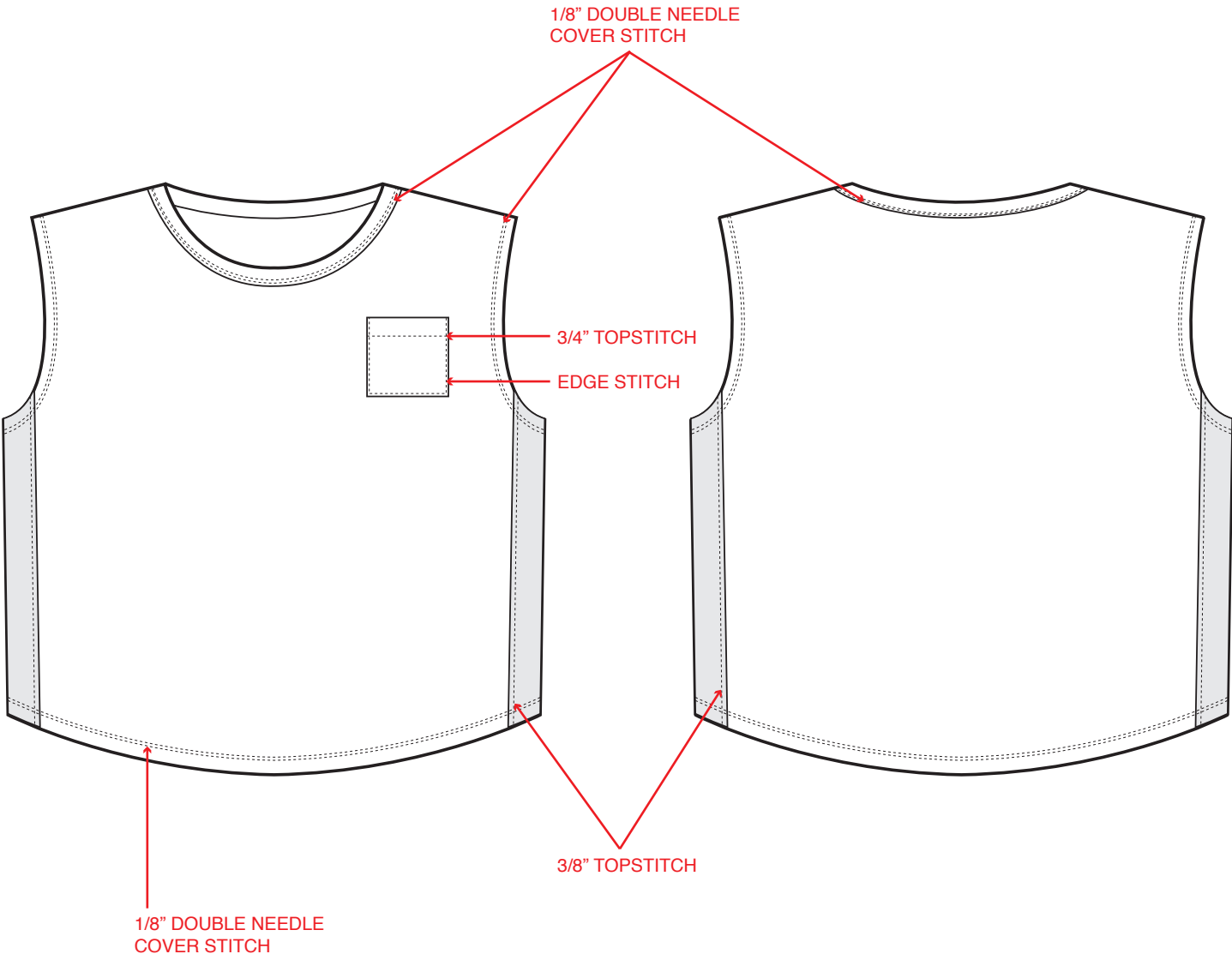
SIDE VIEW

COMPANY

STYLE: 100ABC

TECH : 1.29.14

SPRING 14 : POCKET T



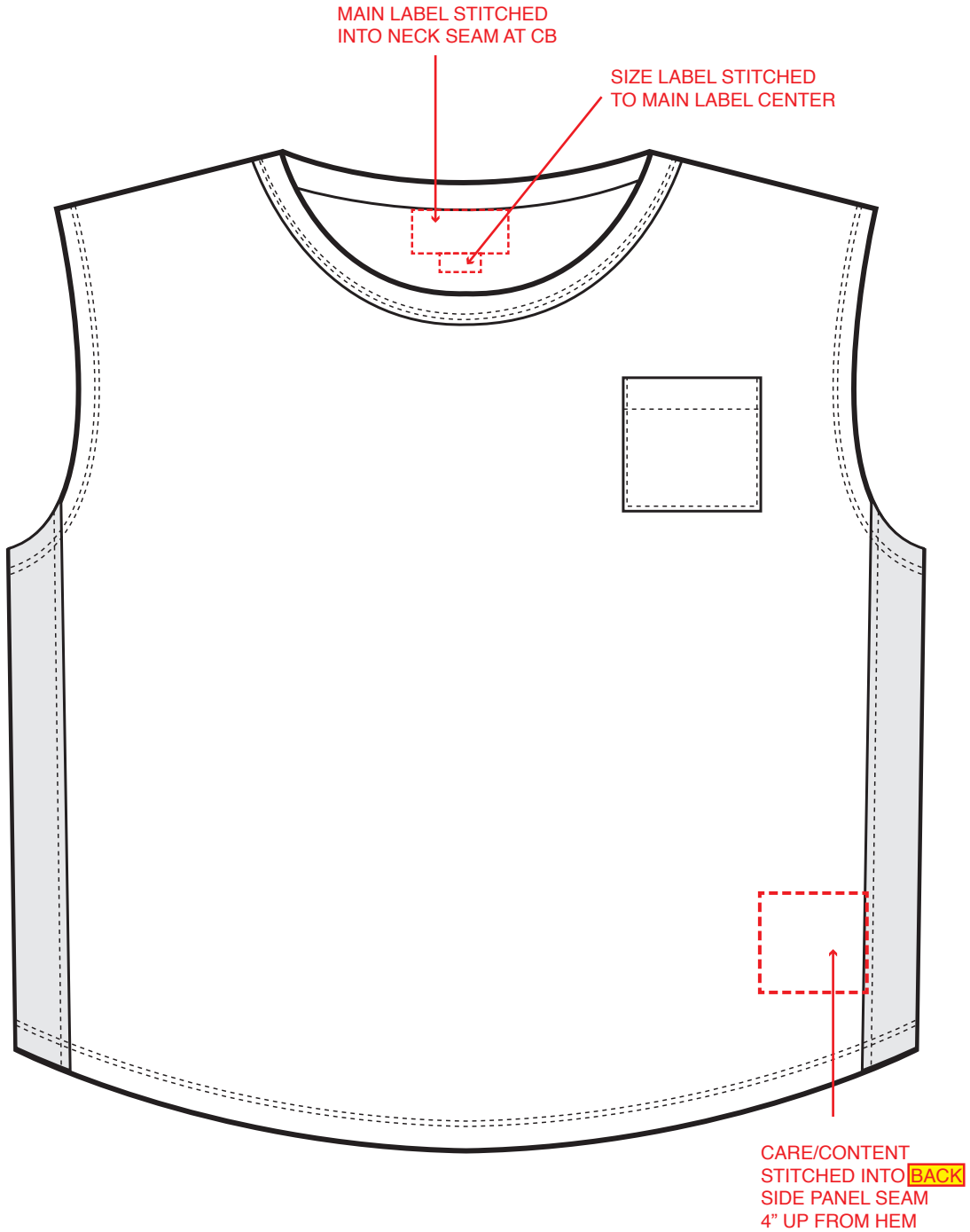
LABEL PLACEMENT

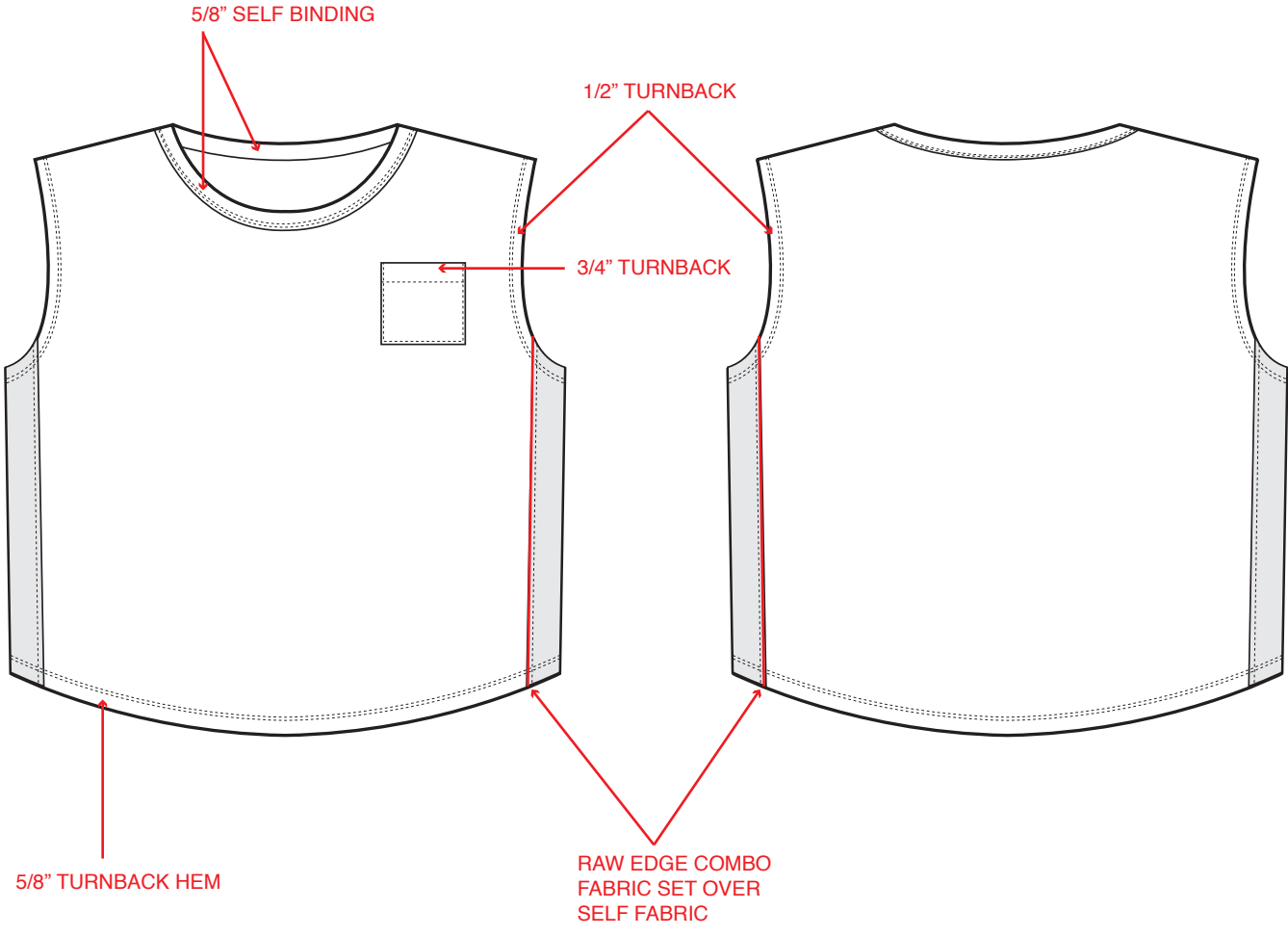
COMPANY

STYLE: 100ABC

TECH : 1.29.14

SPRING 14 : POCKET T



	CONSTRUCTION		
COMPANY	STYLE: 100ABC	TECH : 1.29.14	SPRING 14 : POCKET T
<div><p>5/8" SELF BINDING</p><p>1/2" TURNBACK</p><p>3/4" TURNBACK</p><p>5/8" TURNBACK HEM</p><p>RAW EDGE COMBO FABRIC SET OVER SELF FABRIC</p></div>			

COMPANY
STYLE: 100ABC
TECH : 1.29.14
SPRING 14 : POCKET T
STYLE # 100ABC
FABRIC: COTTON POLY JERSEY
DESCRIPTION: POCKET T-SHIRT
DATE: 1/29/14
SEASON: SP14

01/29/14

02/08/14

TOP/JKT MEASUREMENT:
S
S
REQUESTED
1ST SAMPLE
BACK LENGTH FROM C.B.

22 ¼

21 ¾

CHEST (1" BELOW ARMHOLE) ½ MEASUREMENT

24

24

ACROSS CHEST 5" FROM HSP

21 ¼

21 ¼

ACROSS BACK 6" FROM HSP

21 ¼

21 ¼

WAIST (15 1/2" BELOW HSP) ½ MEASUREMENT

23 ¼

23

SWEEP ½ MEASUREMENT

22 ½

22

ACROSS SHOULDER WIDTH

21 ½

21 ¾

SHOULDER SLOPE

2

2

SLEEVE LENGTH FROM CB/SHOULDER
ARMHOLE STRAIGHT

8 ½

8

MUSCLE / BICEP (1" BELOW ARMHOLE)
ELBOW (8" BELOW ARMHOLE)
SLEEVE OPENING
NECK WIDTH

10 ½

10 ½

FRONT NECK DROP

5 ¼

5 ¾

BACK NECK DROP

1 ¼

1 ¼

PKT DOWN FROM HSP

5 ½

5 ½

PKT WIDTH

3 ¼

3 ½

PKT HEIGHT

3 3/8

3 ¼

NECK BINDING WIDTH

5/8

½

SIDE PANEL WIDTH AT SWEEP

4 ¾

5